



***TRIMINATOR***  
**BY MOSMAN MACHINERY COMPANY INC.**

**Belt Dryer**



# NORCAL BUILT TRUSTED GLOBALLY

Everything we do at Triminators starts with the cannabis farmer. Our story began in Northern California when a few grower friends asked us to create a machine that could trim their premium flower at commercial scale. Today we work with the global farming community, providing innovative harvest solutions to help growers increase productivity and profitability in the rapidly evolving cannabis market.

## SELECTED BY INDUSTRY LEADERS



### *Focused*

We work exclusively in cannabis, from premium indoor to massive outdoor. Our sole focus is engineering equipment for cannabis and hemp farmers.

### *Independent*

We built our business from the ground up, with sweat equity and our own capital. Like the farmers we serve, we know that being independent gives you the freedom to take real risks and make real changes.

### *Family and Employee Owned*

We are family and employee owned. We know our equipment inside and out and take pride in our work, our customers, and the industry we serve.

Triminators has partnered with an internationally recognized industrial process engineering firm to bring cutting edge drying technology to the CBD Hemp market. Combining Triminators' knowledge of CBD with our partners intimate knowledge of drying processes and engineering we are able to provide cutting edge technology specifically designed for the needs of CBD farmers worldwide. Our design team features over 20 specialized engineers and has been trusted by some of the worlds largest and most demanding companies for their drying needs.

## DRYERS TRUSTED BY





## Specifications

### Drying Function

**The Trinator Belt Dryer is designed for use with the following:**

**Material:** Hemp leaves and flowers

**Material Shape:** Shredded/biomass

**Material Size:** 5/15"- 1" approximate dia

**Moisture Content:**

Input: 80%

Output: 10-13%

**Heating Temperature:** 40-90C

# Overview

The Triminators Belt dryer is designed to utilize the combination of heat and air to rapidly dry hemp leaves and flowers. Material enters via conveyor into a multi layer belt system whereby it is dried by airflow and heat. This model includes a natural gas burner, stainless steel touch points and is provided with UL listed gas and electrical components.



## Features

### **UL/NRTL COMPLIANT**

Triminator dryers have been reviewed by Nationally Recognized Testing Laboratories for compliance with UL standards. All components are UL listed and on-site certification is available.

### **FOOD GRADE - GMP READY**

All material touch points are made from 304 stainless to meet food grade standards and requirements.

### **LOW OPERATING COST**

The Belt hemp dryer utilizes a proprietary heat recapture system which recycles up to 80% of the system heat for maximum efficiency and operating cost savings.

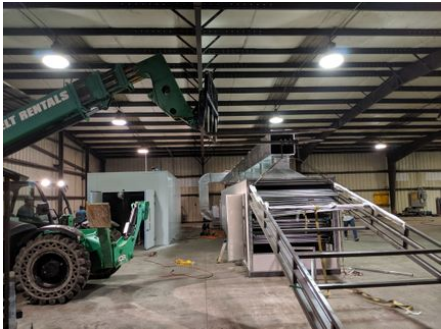
### **ON SITE TRAINING AND COMMISSIONING**

Trinator provides on-site engineering staff to make installation and training fast and easy.

## Schedule

The following schedule is an estimated production and transportation schedule shown from time of deposit. Subject to change at any time.

<input type="checkbox"/> Trinator Belt Hemp Dryer (Standard)	119d	03/02/20	06/28/20	
Deposit	1d	03/02/20	03/02/20	Receipt of deposit initiates the manufacturing schedule.
Manufacturing	60d	03/03/20	05/01/20	Manufacturing
Shipment from Manufacturer	0	05/01/20	05/01/20	Ship Date From Manufacturer
International Shipping (Ocean)	40d	05/02/20	06/10/20	Estimated - Not Guaranteed
Customs	3d	06/11/20	06/13/20	Estimated - Not Guaranteed
Domestic Shipping	5d	06/14/20	06/18/20	Estimated - Not Guaranteed
On Site Installation	10d	06/19/20	06/28/20	Estimated - Not Guaranteed



# Installation Support

On-site support services of 1 engineering technician is included in the price for up to 10 days including travel. Technician shall oversee the installation from a technical perspective and shall commission and train the operations manager at the request of buyer. Travel expenses for service personnel including airfare, lodging, security, and transportation shall be at buyers expense. Travel expenses shall be paid in advance and will be calculated per GSA rate schedule for US locations (<https://www.gsa.gov/travel/plan-book/per-diem-rates>) and the US state department rate schedule for International locations ([https://aoprals.state.gov/content.asp?content\\_id=184&menu\\_id=78](https://aoprals.state.gov/content.asp?content_id=184&menu_id=78))

## Site Requirements

All site work is the responsibility of the buyer. The recommendations below should be verified by the buyer and seller takes no responsibility for site work or installation. Guidelines for proper site preparation listed below. UL or ETL certification is responsibility of buyer on site.

- Relative Humidity of <85%
- Site shall be free of corrosive, flammable and explosive gasses
- Foundation shall be engineered to meet all applicable building and engineering codes, laws and standards.